

# PARTNERS IN PLANNING FOR HEALTHY LIVING

2009 Annual General Meeting

Year in Review

May 22, 2009





Commitment

Collaboration

Communication

Capacity  
Building

Community

The 5 C's of  
*PPHL*





# MEMBERSHIP



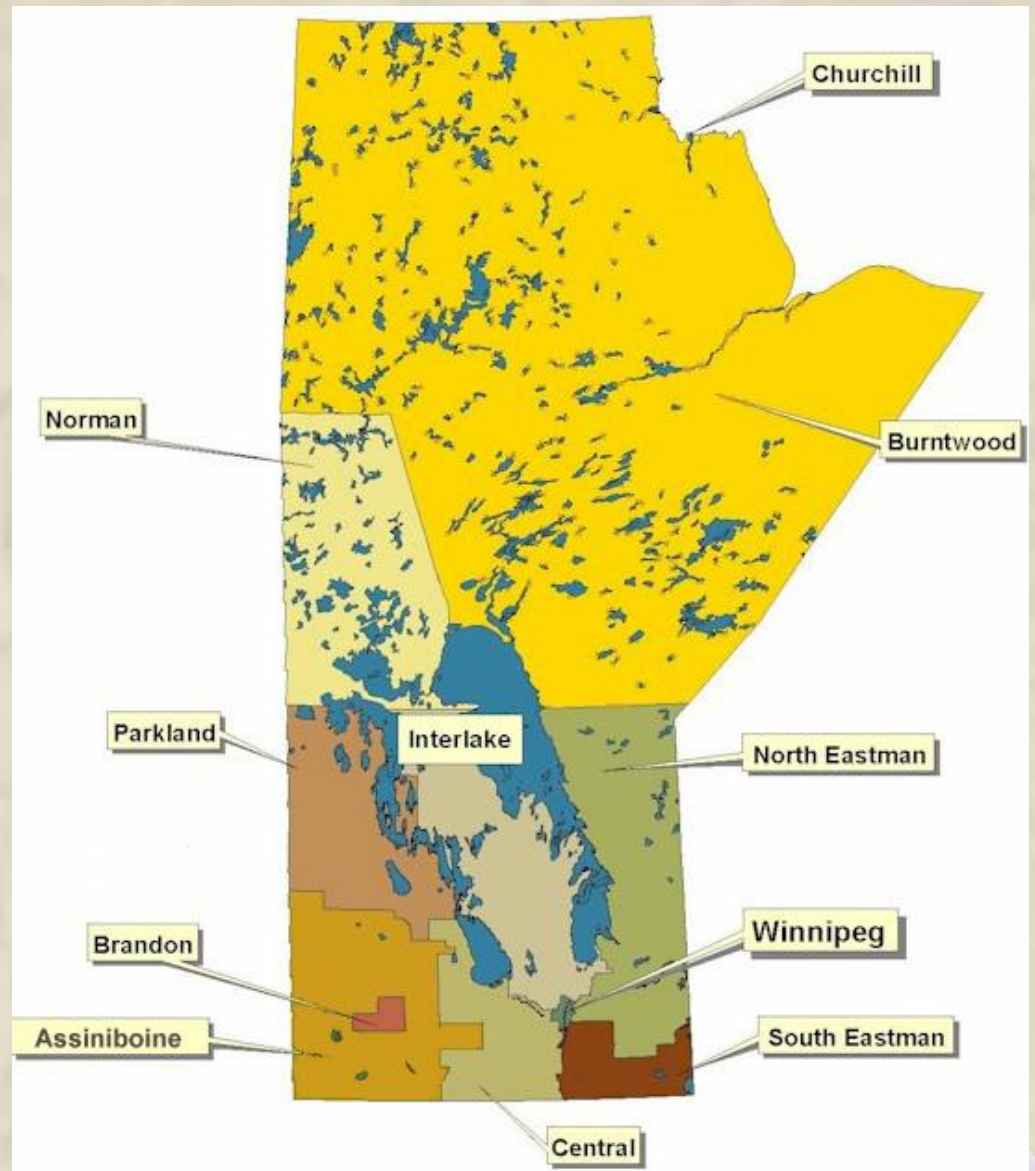
# MEMBER ORGANIZATIONS (19 & GROWING)



- ∞ CancerCare Manitoba
- ∞ Canadian Cancer Society – Manitoba Division
- ∞ Heart & Stroke Foundation of Manitoba
- ∞ Healthy Child Manitoba
- ∞ Manitoba Health & Healthy Living
- ∞ Public Health Agency of Canada, Manitoba & Saskatchewan Division
- ∞ Health in Common
- ∞ Manitoba Education, Citizenship & Youth
- ∞ Alliance for the Prevention of Chronic Disease



- ∞ Assiniboine RHA
- ∞ Brandon RHA
- ∞ Central RHA
- ∞ Churchill RHA
- ∞ Interlake RHA
- ∞ North Eastman RHA
- ∞ NOR-MAN RHA
- ∞ Parkland RHA
- ∞ South Eastman RHA
- ∞ Winnipeg RHA



# EXECUTIVE COMMITTEE

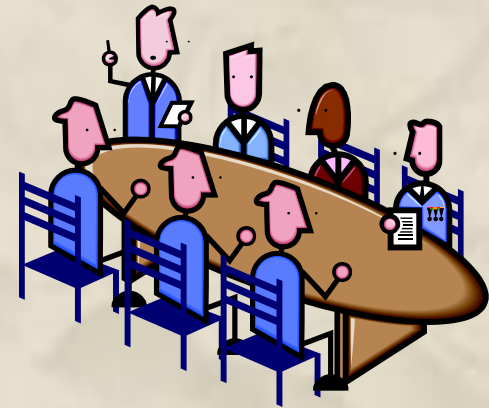
- ∞ Debbie Brown, **Chair**, HSFM
- ∞ Doreen Fey, Interlake RHA
- ∞ Catherine Hynes, NOR-MAN RHA
- ∞ Cathy Steven, Health in Common
- ∞ Mark McDonald, CCS – MB Division
- ∞ Donna Turner – CCMB

## ∞ Ex-Officio:

- ... Jane Griffith
- ... Dexter Harvey

## ∞ Staff:

- ... Tannis Erickson



# SURVEILLANCE/KNOWLEDGE EXCHANGE WORKING GROUP

☞ Catherin Hynes, **Chair**

☞ Tannis Erickson

☞ Laura Plett

☞ Cathy Steven

☞ Jane Griffith

☞ Heather Sparling

☞ Margie Kvern

☞ Nancy McPherson

☞ Jim Evanchuk

☞ Jody Allan

☞ Betty Kozak

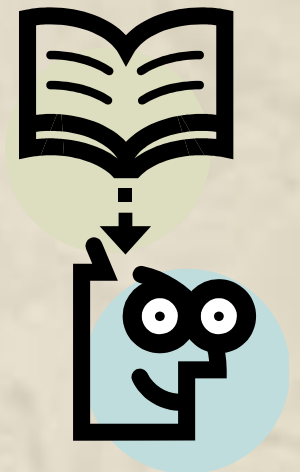
☞ Laura Donatelli

☞ Erin Schillberg

☞ Sande Harlos

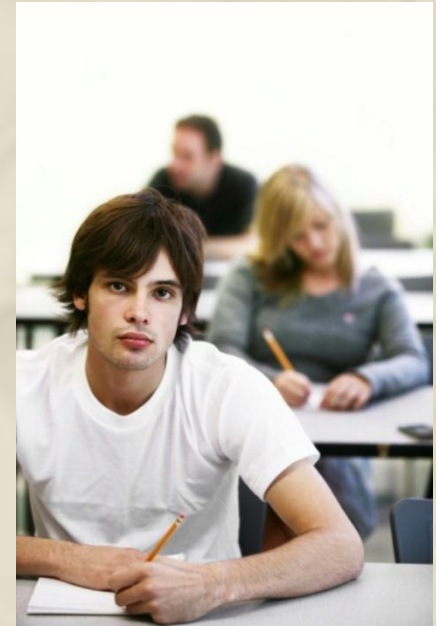
☞ Ales Morgia

☞ Bo Kinesavych



# YHS KNOWLEDGE EXCHANGE WORKING GROUP

- ∞ Tannis Erickson, **Chair**
- ∞ Jane Griffith
- ∞ Jim Evanchuk
- ∞ Laura Plett
- ∞ Grant McManes
- ∞ Brian Hatherly
- ∞ Catherine Hynes
- ∞ Cathy Steven
- ∞ Laura Morrison
- ∞ Barb Wasilewski





# MEETINGS HELD 2008/09

- ∞ General Membership - 3
- ∞ Executive Committee - 6
- ∞ S/KEWG - 7
- ∞ YHS Knowledge Exchange Committee - 2

## CONTRACT STAFF

Tannis Erickson - 3 days per month

Provided through the generous support of a grant  
from CCMB Foundation





# ACCOMPLISHMENTS



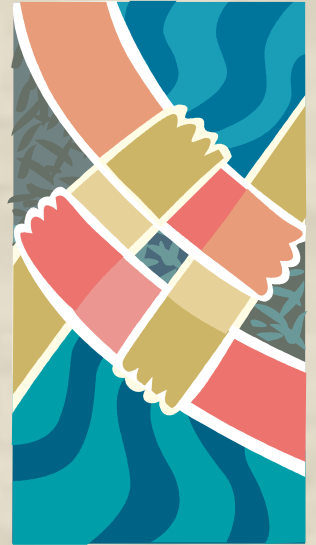
# Relationships

... New members in 2009

... Additional invitations made

... Updated Who We Are/Relationship Map created & distributed

... Information meeting held with Minister of Healthy Living in July 2008



# Surveillance/Knowledge Exchange

... Youth Health Survey (May 2008)

- Majority of grades 9 to 12 students in Manitoba
- Facilitated by partnership between RHAs, MHHL, Healthy Child Manitoba & MECY
- Not possible without the support of CCMB
- School and regional reports complete
- Provincial report in progress

... 2<sup>nd</sup> Annual RFS Symposium (Jan 2009)

Congratulations!



Surveillance/Knowledge  
Exchange Working Group  
Update

...Catherine Hynes, Chair



## ... YHS KE Working Group



- ↳ Sub group of S/KEWG
- ↳ Enhanced membership to include education partners
- ↳ Focus is the sharing of YHS data
- ↳ First task is development of presentation template for use by RHAs
  - ... How data was collected, analyzed and presented in reports
  - ... Focus on capacity building of RHA staff
  - ... Template will be organized by report sections



# ☞ Funding

## ... Canadian Partnership Against Cancer

- ☞ CLASP project with 6 other provinces in development stage
  - ... Pan-Canadian Youth Health Knowledge Exchange Network

## ... MHHL CDPI Risk Factor Funding

- ☞ Provincial YHS report
- ☞ Capacity building & knowledge exchange through workshops
- ☞ Initiate secondary analysis of data



# ♫ Economic Analysis

... Hans Krueger proposal for an economic analysis in Manitoba – supported by H&SFM

# ♫ Provincial Primary Prevention System

... Determining opportunities for PPHL





❧ MPAC (Manitoba  
Partnership Against  
Cancer)

... Determining opportunities for  
PPHL

❧ Heart & Stroke  
Foundation of Manitoba

... YHS grants



# Healthy Living Strategy

...Debbie Brown represents PPHL on Planning Committee

...Determining opportunities for PPHL





# FUTURE OPPORTUNITIES



## Knowledge Exchange Focus

... Take advantage of the YHS opportunities

CPAC proposal

CDPI Risk Factor Surveillance Funding

Healthy Living Strategy

Primary Prevention System

MPAC





??QUESTIONS??

THANK YOU